



Oxford Cambridge and RSA

Practice Paper – Set 2

A Level Further Mathematics A

Y543/01 Mechanics

MARK SCHEME

Duration: 1 hour 30 minutes

MAXIMUM MARK 75



Text Instructions

1. Annotations and abbreviations

Annotation in scoris	Meaning
✓ and ✖	
BOD	Benefit of doubt
FT	Follow through
ISW	Ignore subsequent working
M0, M1	Method mark awarded 0, 1
A0, A1	Accuracy mark awarded 0, 1
B0, B1	Independent mark awarded 0, 1
SC	Special case
^	Omission sign
MR	Misread
Highlighting	
Other abbreviations in mark scheme	Meaning
E1	Mark for explaining a result or establishing a given result
dep*	Mark dependent on a previous mark, indicated by *
cao	Correct answer only
oe	Or equivalent
rot	Rounded or truncated
soi	Seen or implied
www	Without wrong working
AG	Answer given
awrt	Anything which rounds to
BC	By Calculator
DR	This question includes the instruction: In this question you must show detailed reasoning.

2. Subject-specific Marking Instructions for A Level Further Mathematics A

- a Annotations should be used whenever appropriate during your marking. The A, M and B annotations must be used on your standardisation scripts for responses that are not awarded either 0 or full marks. It is vital that you annotate standardisation scripts fully to show how the marks have been awarded. For subsequent marking you must make it clear how you have arrived at the mark you have awarded.
- b An element of professional judgement is required in the marking of any written paper. Remember that the mark scheme is designed to assist in marking incorrect solutions. Correct solutions leading to correct answers are awarded full marks but work must not be judged on the answer alone, and answers that are given in the question, especially, must be validly obtained; key steps in the working must always be looked at and anything unfamiliar must be investigated thoroughly. Correct but unfamiliar or unexpected methods are often signalled by a correct result following an apparently incorrect method. Such work must be carefully assessed. When a candidate adopts a method which does not correspond to the mark scheme, escalate the question to your Team Leader who will decide on a course of action with the Principal Examiner. If you are in any doubt whatsoever you should contact your Team Leader.
- c The following types of marks are available.

M

A suitable method has been selected and *applied* in a manner which shows that the method is essentially understood. Method marks are not usually lost for numerical errors, algebraic slips or errors in units. However, it is not usually sufficient for a candidate just to indicate an intention of using some method or just to quote a formula; the formula or idea must be applied to the specific problem in hand, e.g. by substituting the relevant quantities into the formula. In some cases the nature of the errors allowed for the award of an M mark may be specified.

A

Accuracy mark, awarded for a correct answer or intermediate step correctly obtained. Accuracy marks cannot be given unless the associated Method mark is earned (or implied). Therefore M0 A1 cannot ever be awarded.

B

Mark for a correct result or statement independent of Method marks.

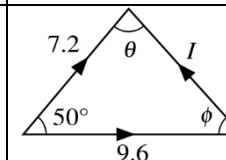
E

Mark for explaining a result or establishing a given result. This usually requires more working or explanation than the establishment of an unknown result.

Unless otherwise indicated, marks once gained cannot subsequently be lost, e.g. wrong working following a correct form of answer is ignored. Sometimes this is reinforced in the mark scheme by the abbreviation *isw*. However, this would not apply to a case where a candidate passes through the correct answer as part of a wrong argument.

- d When a part of a question has two or more 'method' steps, the M marks are in principle independent unless the scheme specifically says otherwise; and similarly where there are several B marks allocated. (The notation 'dep*' is used to indicate that a particular mark is dependent on an earlier, asterisked, mark in the scheme.) Of course, in practice it may happen that when a candidate has once gone wrong in a part of a question, the work from there on is worthless so that no more marks can sensibly be given. On the other hand, when two or more steps are successfully run together by the candidate, the earlier marks are implied and full credit must be given.
- e The abbreviation FT implies that the A or B mark indicated is allowed for work correctly following on from previously incorrect results. Otherwise, A and B marks are given for correct work only – differences in notation are of course permitted. A (accuracy) marks are not given for answers obtained from incorrect working. When A or B marks are awarded for work at an intermediate stage of a solution, there may be various alternatives that are equally acceptable. In such cases, what is acceptable will be detailed in the mark scheme. If this is not the case, please escalate the question to your Team Leader who will decide on a course of action with the Principal Examiner. Sometimes the answer to one part of a question is used in a later part of the same question. In this case, A marks will often be 'follow through'. In such cases you must ensure that you refer back to the answer of the previous part question even if this is not shown within the image zone. You may find it easier to mark follow through questions candidate-by-candidate rather than question-by-question.
- f Unless units are specifically requested, there is no penalty for wrong or missing units as long as the answer is numerically correct and expressed either in SI or in the units of the question. (e.g. lengths will be assumed to be in metres unless in a particular question all the lengths are in km, when this would be assumed to be the unspecified unit.) We are usually quite flexible about the accuracy to which the final answer is expressed; over-specification is usually only penalised where the scheme explicitly says so. When a value is given in the paper only accept an answer correct to at least as many significant figures as the given value. This rule should be applied to each case. When a value is not given in the paper accept any answer that agrees with the correct value to 2 s.f. Follow through should be used so that only one mark is lost for each distinct accuracy error, except for errors due to premature approximation which should be penalised only once in the examination. There is no penalty for using a wrong value for *g*. E marks will be lost except when results agree to the accuracy required in the question.
- g Rules for replaced work: if a candidate attempts a question more than once, and indicates which attempt he/she wishes to be marked, then examiners should do as the candidate requests; if there are two or more attempts at a question which have not been crossed out, examiners should mark what appears to be the last (complete) attempt and ignore the others. NB Follow these maths-specific instructions rather than those in the assessor handbook.
- h For a genuine misreading (of numbers or symbols) which is such that the object and the difficulty of the question remain unaltered, mark according to the scheme but following through from the candidate's data. A penalty is then applied; 1 mark is generally appropriate, though this may differ for some units. This is achieved by withholding one A mark in the question. Marks designated as cao may be awarded as long as there are no other errors. E marks are lost unless, by chance, the given results are established by equivalent working. 'Fresh starts' will not affect an earlier decision about a misread. Note that a miscopy of the candidate's own working is not a misread but an accuracy error.
- i If a calculator is used, some answers may be obtained with little or no working visible. Allow full marks for correct answers (provided, of course, that there is nothing in the wording of the question specifying that analytical methods are required). Where an answer is wrong but there is some evidence of method, allow appropriate method marks. Wrong answers with no supporting method score zero. If in doubt, consult your Team Leader.
- j If in any case the scheme operates with considerable unfairness consult your Team Leader.

Question		Answer	Marks	AOs	Guidance
1	(i)	$D - 140 - 850g \sin 7^\circ = 850 \times 0.4$ $P = D \times 12$ oe soi awrt 17900 (or 17.9kW)	M1 M1 A1 [3]	3.3 1.1 1.1	Nil, 4 terms, component of mg $D = 1495$ 17942.06 W
1	(ii)	$\frac{17942.06}{v} = 140 + 850g \sin 7^\circ$ $v = 15.5$ so the constant speed is 15.5 ms^{-1}	M1 A1 [2]	3.4 1.1	FT their 17942.06
2	(i)	Use of vector triangle for impulse and momentum $I^2 = 7.2^2 + 9.6^2 - 2 \times 7.2 \times 9.6 \cos 50^\circ$ $I = 7.43 \text{ (Ns)}$ Alternative solution Change in momentum $\rightarrow = 7.2 \cos 50^\circ - 9.6$ $I^2 = (7.2 \cos 50^\circ - 9.6)^2 + (7.2 \sin 50^\circ)^2$ $I = 7.43 \text{ (Ns)}$	M1 M1 A1 M1 M1 A1 [3]	1.1a 1.1 1.1	May be implied Use of cosine rule -4.971... $(4.971\dots)^2 + (5.515\dots)^2$
2	(ii)	$\frac{\sin 50^\circ}{7.43} = \frac{\sin \theta}{9.6}$ or $\frac{\sin 50^\circ}{7.43} = \frac{\sin \phi}{7.2}$ oe $\sin \theta = 0.9903$ or $\sin \phi = 0.7428$ oe Angle with original direction is 132.0° Alternative solution $\tan \phi = \frac{5.515\dots}{4.971\dots}$ oe $\phi = 48$ oe Angle with original direction is 132.0°	M1 A1 A1 M1 A1 A1 [3]	1.1a 1.1 1.1	e.g. use of cosine rule to find θ or ϕ $\cos \theta = 0.1386$, $\cos \phi = 0.6696$ Allow positive or negative value 46.967...



Question		Answer	Marks	AOs	Guidance	
3	(i)	$T = 365 \times 24 \times 60 \times 60 \text{ s}$ and $R = 1.5 \times 10^{11} \text{ m}$	B1	1.1a	Time converted to s and radius to m	$(T = 31\,536\,000 \text{ s})$ $(\omega = 1.99 \times 10^{-7} \text{ s}^{-1})$ $(v = 2.99 \times 10^4 \text{ m s}^{-1})$
		$\omega = \frac{2\pi}{T}$ or $v = \frac{2\pi R}{T}$	M1	1.1	Used (units of T could be wrong)	
		$F = mR\omega^2$ or $F = \frac{mv^2}{R}$	M1	1.1	Used (units could be wrong)	
		$F = 5.97 \times 10^{24} \times 1.5 \times 10^{11} \times (1.99 \times 10^{-7})^2$ oe	M1	1.1	FT their values, <i>provided that</i> there was a proper attempt at conversion of units	
		3.5×10^{22} or $3.6 \times 10^{22} \text{ N}$	A1 [5]	1.1	cao	
3	(ii)	[The force is directed] towards the sun	B1 [1]	1.1		

Question			Answer	Marks	AOs	Guidance
4	(i)	(a)	$T_A = \frac{\lambda_A \times 2}{2}$ and $T_B = \frac{\lambda_B \times 1}{2}$	B1	3.3	Hooke's law used for both strings
			$\cos PAB = \frac{4}{5}$ and $\cos PBA = \frac{3}{5}$ oe	B1	1.1	Correct trig for both angles used
			$T_A \cos PAB = T_B \cos PBA$	M1	3.1b	Equating horizontal components
			$\frac{2\lambda_A}{2} \times \frac{4}{5} = \frac{\lambda_B}{2} \times \frac{3}{5} \Rightarrow \lambda_B = \frac{8}{3}\lambda_A$	A1	1.1	AG
				[4]		
4	(i)	(b)	$T_A \sin PAB + T_B \sin PBA = mg$	M1	3.1b	Vertical equilibrium; 3 forces
			$\frac{2\lambda_A}{2} \times \frac{3}{5} + \frac{8}{3} \times \frac{\lambda_A}{2} \times \frac{4}{5} = mg$	M1	1.1	Using tensions and $\lambda_B = \frac{8}{3}\lambda_A$
			$\lambda_A = \frac{3}{5}mg$	A1	1.1	
				[3]		
4	(ii)		$EPE = \frac{\lambda_A \times 2^2}{2 \times 2} + \frac{\lambda_B \times 1^2}{2 \times 2}$	M1	3.4	soi
			$= mg$	A1	1.1	
				[2]		
4	(iii)		$T'_A = 0.3mg = \frac{3}{5}mg x_A$	M1	3.1b	Considering equilibrium of Q and using Hooke's law
			$T'_B = mg + T'_A$	M1	1.1	Considering equilibrium of P ; must involve 3 terms
			$1.3mg = \frac{8}{3} \times \frac{3}{5}mg x_B$	M1	1.1	Use of Hooke's law for upper string, with T'_A eliminated
			Distance is $1 + 2 + \frac{13}{8} + 2 = 6\frac{5}{8}$ m	A1	3.2a	oe, e.g. awrt 6.63 m
				[4]		$(x_A = 1)$ Or $T'_B = mg + 0.3mg$ soi $(x_B = \frac{13}{8})$

Question		Answer	Marks	AOs	Guidance
5	(i)	$[E] = [Fx] = MLT^{-2}L$ $[E] = ML^2T^{-2}$ and $[\omega] = T^{-1}$ so $ML^2T^{-2} = [I]T^{-2} \Rightarrow [I] = ML^2$	M1 A1 A1 [3]	1.1a 1.1 2.2a	Use of correct equation for, or units of, energy to find dimensions
5	(ii)	$I = mr^2 \dots$ $\dots \times k$ where k is dimensionless	B1 B1 B1 [3]	2.2b 3.3 3.4	Must be “ $I =$ ”
5	(iii)	$[F] = MLT^{-2}$, $[\alpha] = T^{-2}$ and their $[I]$ all used $[F] = MLT^{-2} \neq [I\alpha] = ML^2T^{-2}$ so the student’s suggestion is incorrect	M1 A1 [2]	1.2 2.3	
5	(iv)	$[x] = L$	B1 [1]	2.2a	
5	(v)	E.g. The relationship could be $Fx = pI\alpha$ for some dimensionless quantity p	B1 [1]	3.5b	Or: there might be some other term(s) consisting of some dimensionally correct combination of quantities that need to be included

Question		Answer	Marks	AOs	Guidance
6	(i)	$T - kv^2 = mv \frac{dv}{dx}$ $m \int \frac{-2kv}{T - kv^2} dv = \int -2k dx$ $m \ln(T - kv^2) = -2kx + c$ $\ln(T - kv^2) = \frac{-2kx + c}{m} \Rightarrow T - kv^2 = e^{\frac{-2kx + c}{m}}$ $\Rightarrow T - kv^2 = e^{\frac{-2kx}{m}} e^{\frac{c}{m}} \Rightarrow v^2 = \frac{1}{k} \left(T - Ae^{\frac{-2kx}{m}} \right)$	M1 M1 M1 M1 A1 [5]	3.3 3.4 1.1 1.1 2.1	NII with 3 terms and $a = v \frac{dv}{dx}$ used Separating the variables Correctly integrating both sides Exponentiation, giving $f(v) = e^{g(x)}$ AG so intermediate step needed oe, eg stating $A = e^{\frac{c}{m}}$
	(ii)	Work done by constant force is $T(1 - 0) = T$ $x = 0, v = 0$ gives $v^2 = \frac{T}{k} \left(1 - e^{\frac{-2kx}{m}} \right)$ KE gain is $\frac{1}{2}mv_1^2 = \frac{mT}{2k} \left(1 - e^{\frac{-2k}{m}} \right)$ So work done against resistance $= T - \frac{mT}{2k} \left(1 - e^{\frac{-2k}{m}} \right)$ Alternative solution $x = 0, v = 0$ gives $v^2 = \frac{T}{k} \left(1 - e^{\frac{-2kx}{m}} \right)$ WD against resistance $= \int_0^1 kv^2 dx = T \int_0^1 \left(1 - e^{\frac{-2kx}{m}} \right) dx$ $= T \left[x + \frac{m}{2k} e^{\frac{-2kx}{m}} \right]_0^1$ $= T \left(1 + \frac{m}{2k} e^{\frac{-2k}{m}} - \frac{m}{2k} \right)$	B1 M1 M1 A1 M1 M1 A1 [4]	1.1 3.4 3.4 3.4	Use of initial conditions to find A oe Use of initial conditions to find A oe
6	(iii)	The limiting velocity is $\sqrt{\frac{T}{k}}$	B1 [1]	3.2a	

Question		Answer	Marks	AOs	Guidance	
7	(i)	OV is an axis of symmetry of S	E1 [1]	2.4		
7	(ii)	$x_H = \frac{3}{8} \times 0.4$ and $x_C = \frac{1}{4} \times 1.2$ Use of $\sum m_i x_i = (\sum m_i) \times OG$, or equivalent equation for moments about V (e.g.) $\frac{1}{3}\pi \times 0.4^2 \times 1.2 \times 0.3 + \frac{2}{3}\pi \times 0.4^3 \times (-0.15)$ $= \left(\frac{1}{3}\pi \times 0.4^2 \times 1.2 + \frac{2}{3}\pi \times 0.4^3\right) \times OG$ $\frac{8}{625} = \frac{8}{75} OG \Rightarrow OG = 0.12 \text{ m}$	B1 M1 A1 A1 A1 [5]	2.2a 3.1b 1.1 1.1 3.2a	$x_H = 0.15$ and $x_C = 0.3$ For the sum of the moments about O , one of the distances must be negative (or equivalent, e.g. difference of moments considered); for moments about V (e.g.) distances from V must be attempted oe AG so some intermediate working must be seen	One may be negative Masses may be represented by volumes; density may be present, but condone its absence
7	(iii)	Moments about O (e.g.): $W \times 0.12 = T_V \times 1.2$ $T_V + T_O = W$ $T_O = 0.9W$ and $T_V = 0.1W$	M1* dep* M1 A1 [3]	3.1b 1.1 1.1	Taking moments: 2 terms if about O , G or V ; 3 terms if about any other point Or a second moments equation, e.g. $W \times 1.08 = T_O \times 1.2$ Both	Each term must be of the form force \times distance

Question		Answer	Marks	AOs	Guidance	
8	(i)	$\frac{1}{2}mu^2 = mgh(1 - \cos\theta)$	M1	3.3	Conservation of energy for A	v_B is velocity of B after first collision
		$mu = 2mv_B$	M1	3.4	Conservation of momentum	
		$e = \frac{v_B}{u}$	M1	1.1	Restitution	
		$v_B = \frac{1}{2}u$ and $e = \frac{1}{2}$	A1	1.1		
		$2m \times \frac{1}{2}u = mV_A + 2mV_B$	M1	3.4	Conservation of momentum for 2nd collision with unchanged v_B	
		$\frac{1}{2} = \frac{V_A - V_B}{\frac{1}{2}u}$	M1	3.4	Restitution for 2nd collision	
		$V_A = \frac{1}{2}u$	A1	1.1		
		$\frac{1}{2}m\left(\frac{1}{2}u\right)^2 = mgh(1 - \cos\phi)$	M1	3.4	Conservation of energy for A	
		$\frac{1}{8}mu^2 = \frac{1}{4}mgh(1 - \cos\theta) = mgh(1 - \cos\phi)$	A1	2.1	AG so elimination of $\frac{1}{2}mu^2$ oe must be clearly shown	
				$\Rightarrow \cos\phi = \frac{3 + \cos\theta}{4}$		
			[9]			
8	(ii)	$V_B = \frac{1}{4}u$	B1	1.1		Or with signs reversed, if different 'positive' direction chosen
		$2m \times \frac{1}{4}u + m \times \left(-\frac{1}{2}u\right) = mV_A + 2mv_B$	M1	3.4	Conservation of momentum for 3rd collision	
		$\frac{1}{2} = \frac{V_A - V_B}{\frac{1}{4}u - \left(-\frac{1}{2}u\right)}$	M1	3.4	Restitution for 3rd collision	
		$v_B = -\frac{1}{8}u$ and $v_A = \frac{1}{4}u$	A1	1.1		
		$\text{KE loss} = \frac{\frac{1}{2}m \times \left(\frac{1}{4}u\right)^2 + \frac{1}{2} \times 2m \times \left(-\frac{1}{8}u\right)^2}{\frac{1}{2}mu^2} = \frac{3}{32} = 9.4\%$	A1	1.1		
		So percentage of KE remaining is 90.6%				
			[5]			

Question		Answer	Marks	AOs	Guidance	
8	(iii)	During and between the 1st and 2nd collisions there is no external horizontal force acting on A and while there is an external force acting on B its velocity and hence momentum is the same just before the 2nd collision as it is just after the 1st collision	E1 [1]	2.4	Identifying the unchanged velocity for B in the two collisions	
8	(iv)	Between the 2nd and 3rd collisions a component of the tension in the string OA is horizontal and so the momentum of the system is not conserved	E1 [1]	2.4	Identifying the relevant external force acting	