

Time: 60 mins

Name _____

Teacher _____

1st Year Assessment

November 2017

Non-calculator

Section A – mastery

[30]

1. Round to the degree given in brackets:

(a) 3.039 (1dp) _____ [1] (b) 58.1574 (2dp) _____ [1]

2. Calculate:

(a) $448.133 \div 7$ [2]

(b) 763×58 [3]

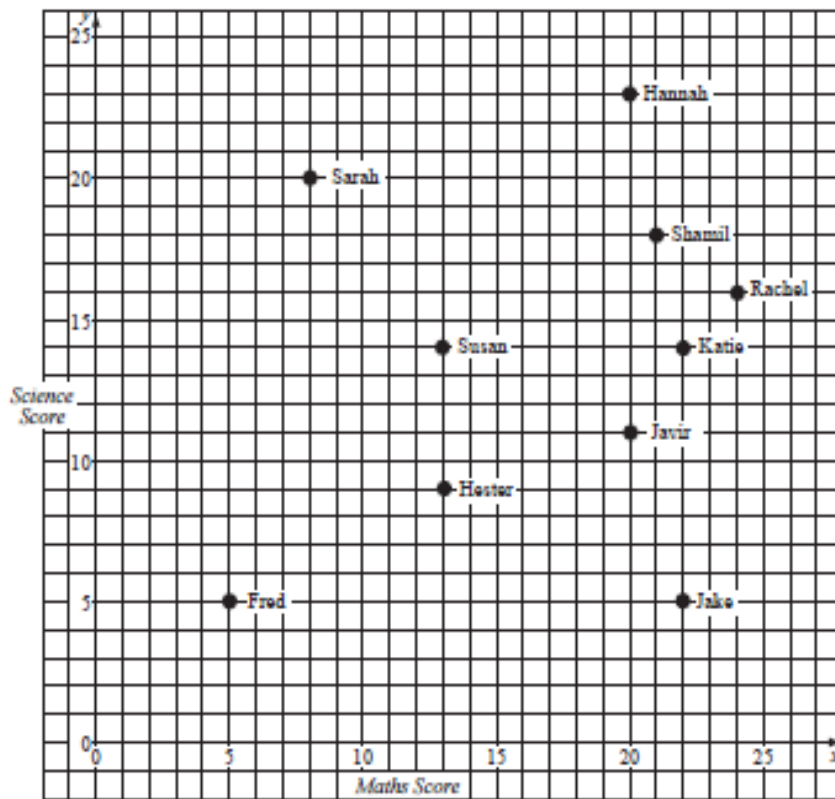
(c) 9.2×3.54 [3]

(d) $441 \div 12$ [2]

3. Order the following numbers (smallest first): [2]

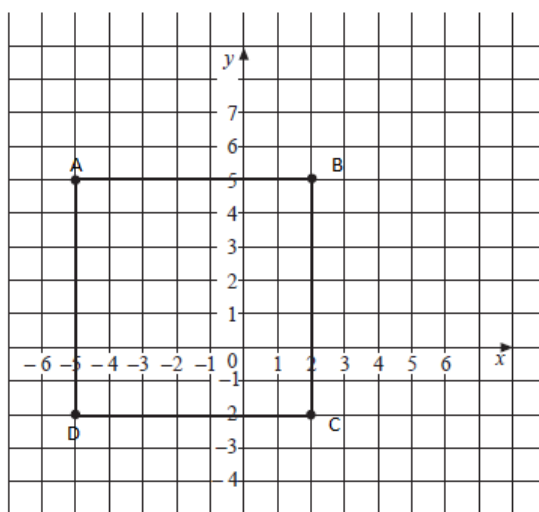
0.79, 0.792, 0.709, 0.97, 0.0972

4. Use the scattergraph below to answer the questions. It shows the scores in science and maths tests for 10 children.



- a) What mark did Sarah score in science? _____ [1]
- b) Who scored the same mark in maths as Hester? _____ [1]
- c) Who scored the same mark in both tests? _____ [1]

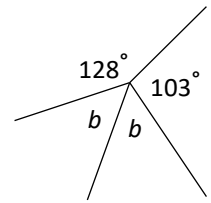
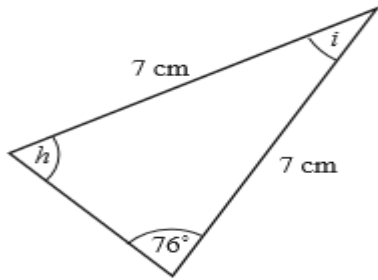
5. Write down the coordinates of the corners of the square marked on the grid.



A _____ B _____ C _____ D _____

[3]

6. Work out the size of each angle as marked on the diagrams below. Show your working.

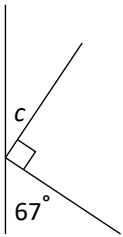


Angle h = _____

Angle b = _____

Angle i = _____

(c)

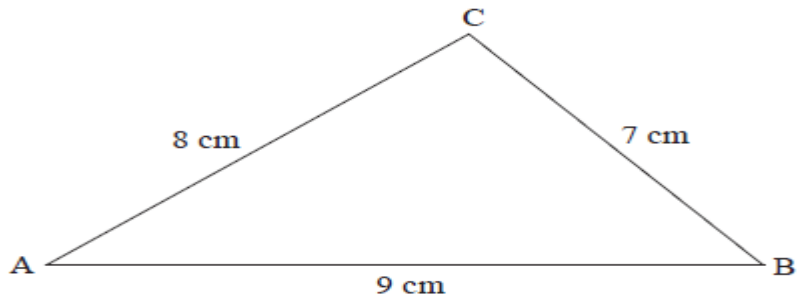


Angle c = _____

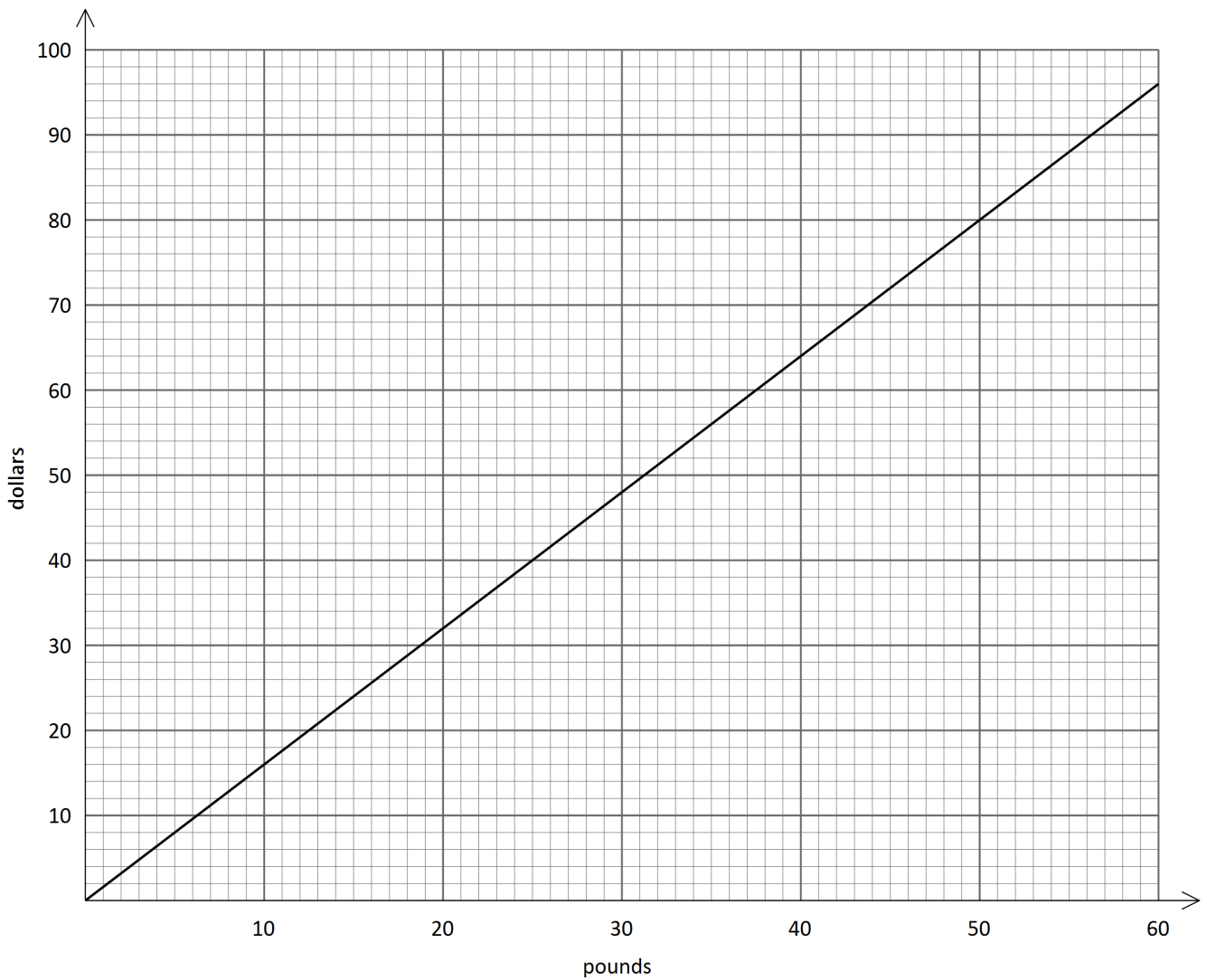
[4]

7. Construct the triangle shown below accurately.

[3]



8. The graph below helps us convert between pounds and dollars.



Use the graph to do these conversions.

a) £30 into \$. _____

b) How would you convert \$480 into £? What is the answer?

Section B – Problem Solving

[30]

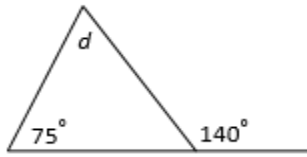
9. A table tennis ball travels 17.59m in one second. A squash ball travels 31.42m in one second. How much further would the squash ball travel than the table tennis ball in five seconds? (you can assume the balls do not change speed). [3]

10. 784 boxes of baked beans were given to 15 shops in a supermarket chain. Each shop got the same number of boxes.
a) How many boxes did each shop get?
b) How many boxes were left over? [3]

11. Mary bought three toothbrushes for £1.62 each, four bars of soap for 96p each, one deodorant which cost £2.29 and one bottle of sunscreen which cost £9.49. How much change did Mary get from £25? [4]

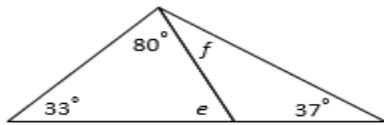
12. Find the unknown angles in each of these diagrams.
Give reasons for your answers (state the angle fact used).

[6]



Angle $d =$ _____

Reason _____



Angle $e =$ _____

Reason _____

Angle $f =$ _____

Reason _____

13. Write down the two missing terms in each of the sequences below:

a) 1, 1, 2, 3, 5, 8, __, __

c) 2, 4, 8, __, 32, 64, __

b) 39, 33, 27, 21, __, __

d) 520, 260, 130, __, __

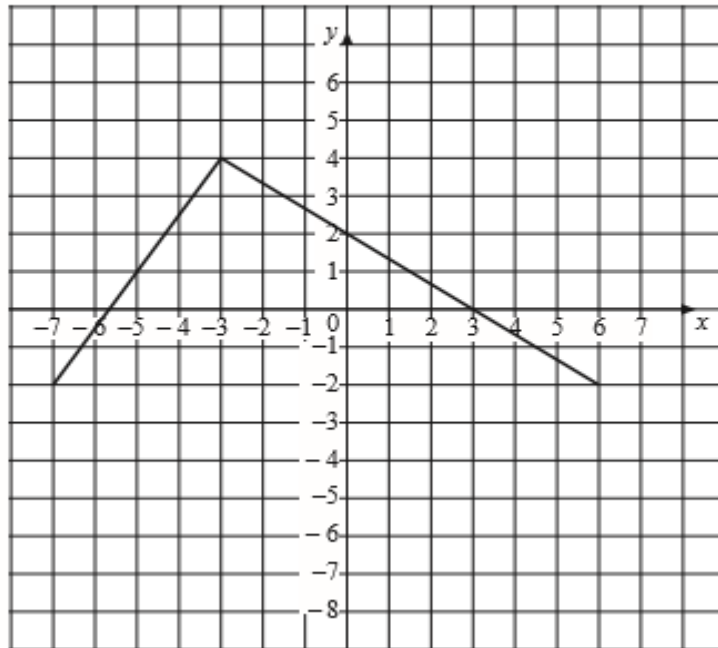
[4]

14. Joe pours 1.38 litres then 2.6 litres out of a 5 litre container of milk. How much milk is left in the container?

[3]

15.

The diagram shows 2 sides of a rectangle.



a) Complete the rectangle on the grid. [1]

b) Write down the coordinates of the four corners of the rectangle. [2]

16. a) Boxes hold 12 eggs each. How many boxes can I fill with 2000 eggs?

_____ [2]

b) Each tin of paint covers 11m^2 of wall. How many tins of paint do I need to cover 538m^2 of wall?

_____ [2]

END OF TEST