

Interleaf 2

1) Calculate:

a) $3 \times 5^2 - 14 \times 3$

b) $\frac{14}{6-4} + 3^2$

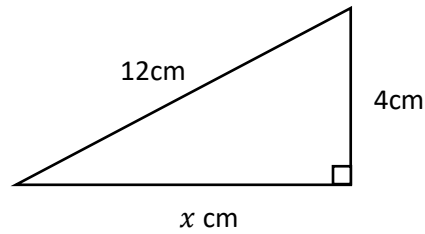
2) Estimate $\frac{40.3 \times \sqrt{8.7822}}{1.276^2}$

3) I buy 12 packs of eggs each costing £1.54 and 3 bags of flour each costing £2.87.

How much does this cost in total?

4) Find the HCF of 810 and 216

5) Find x , round your answer to 3sf.



Answers

1a) 33 b) 16 2) 120 3) £27.09 4) 18 5) 11.3